



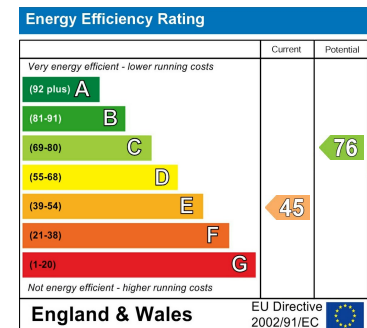
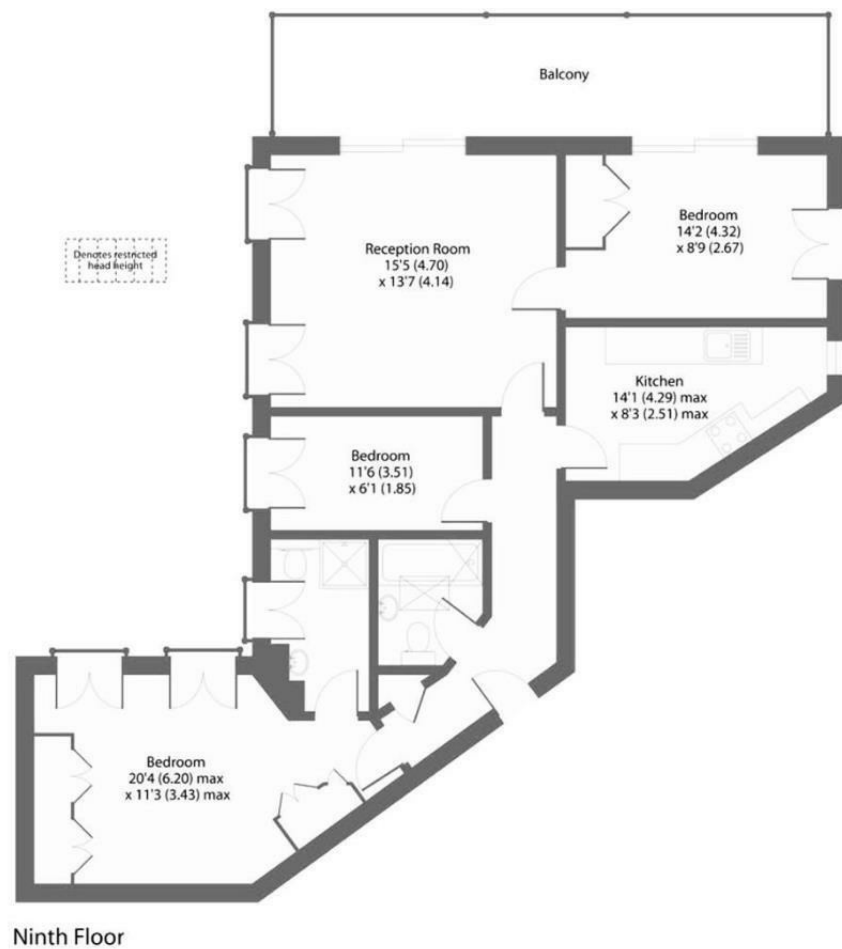
## GLOUCESTER PLACE LONDON, NW1

£6,500 PER MONTH

Extremely modern 3 bed 2 bath apartment located in a purpose built block situated in Dorset House on Gloucester Place. The flat comprises of a spacious reception room & dining room, separate fully fitted kitchen with integrated appliances, 3 bedrooms (en-suite) and bathroom suite.

The block benefits from portage, lift and is easily within access to Baker Street Tube Station and surrounding amenities. The flat is a top floor flat boasting integrated speakers, entertainment system and a large balcony overlooking London.

**PMP** | INTERNATIONAL



Agents Note: Whilst every care has been taken to prepare these particulars, they are for guidance purposes only. All measurements are approximate and are for general guidance purposes only and whilst every care has been taken to ensure their accuracy, they should not be relied upon and potential buyers/tenants are advised to recheck the measurements

London  
PMP International  
94 Belsize Lane  
Belsize Park  
London  
NW3 5BE

020 7701 2878  
info@pmpi.co.uk  
www.pmpi.co.uk

**PMP** | INTERNATIONAL